

Steel	
Material Standard:	BS 1449 Part2:1983
Specification:	BS 6946:1988
Finishing:	hot dip galvanized to ISO 1461:1999

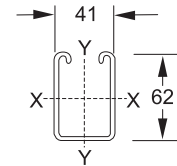
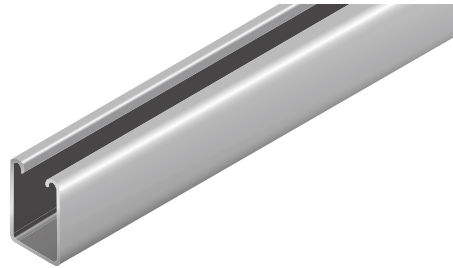
Plain Channel

DR62

Item No.

4007041623 (3 meters long)

4007041626 (6 meters long)



Span or column unsupported Height in mm	Uniform Load at 167 N/mm <sup>2</sup> Stress.kg	Deflection in mm at 167 N/mm <sup>2</sup>	Uniform Load at Max. Deflec. Of 1/200th. Span. Kg	Uniform load at Max. Deflec. Of 1/360th. Span. Kg	Max. Load of column loaded @ Centroid kg	Max. Load of column loaded @ slot face kg
500	-	-	-	-	7050	2095
1000	816	2.49	-	-	3063	1511
1500	544	5.60	-	-	1570	1028
2000	408	9.97	-	227	1017	758
2500	326	15.58	261	145	743	595
3000	272	22.43	181	101	581	486

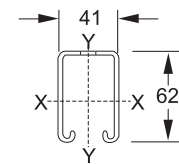
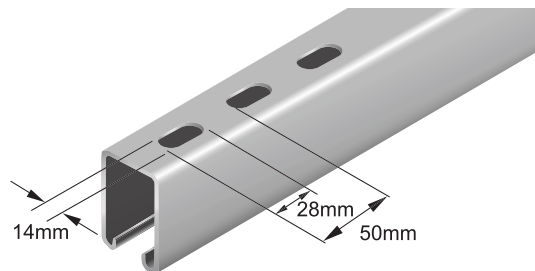
Slotted Channel

DR62S

Item No.

4006041623 (3 meters long)

4006041626 (6 meters long)



Span or column unsupported Height in mm	Uniform Load at 167 N/mm <sup>2</sup> Stress.kg	Deflection in mm at 167 N/mm <sup>2</sup>	Uniform Load at Max. Deflec. Of 1/200th. Span. Kg	Uniform load at Max. Deflec. Of 1/360th. Span. Kg	Max. Load of column loaded @ Centroid kg	Max. Load of column loaded @ slot face kg
500	-	-	-	-	6564	2047
1000	759	2.67	-	-	3256	1554
1500	506	6.02	-	350	1674	1071
2000	379	10.70	354	196	1083	794
2500	303	16.73	226	126	792	626
3000	253	24.09	157	87	621	514

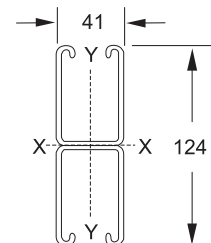
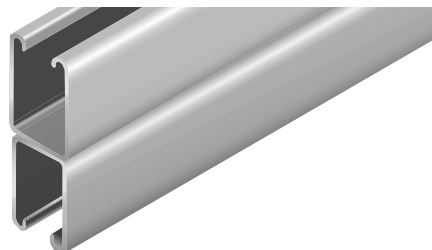
Combination Channel

DR62D

Item No.

4001041623 (3 meters long)

4001041626 (6 meters long)



Span or column unsupported Height in mm	Uniform Load at 167 N/mm <sup>2</sup> Stress.kg	Deflection in mm at 167 N/mm <sup>2</sup>	Uniform Load at Max. Deflec. Of 1/200th. Span. Kg	Uniform load at Max. Deflec. Of 1/360th. Span. Kg	Max. Load of column loaded @ Centroid kg	Max. Load of column loaded @ slot face kg
500	-	-	-	-	14440	3604
1000	-	-	-	-	13103	3515
1500	1605	3.07	-	-	10318	3277
2000	1204	5.47	-	-	6991	2847
2500	963	8.54	-	782	4766	2392
3000	802	12.30	-	543	3411	1994

Grade 304 & 316 Stainless Steel and special length available on request