

| Steel | |
|--------------------|-------------------------------------|
| Material Standard: | BS 1449 Part2:1983 |
| Specification: | BS 6946:1988 |
| Finishing: | hot dip galvanized to ISO 1461:1999 |

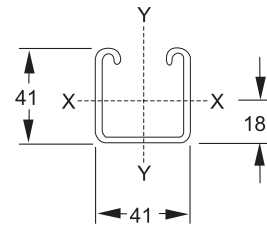
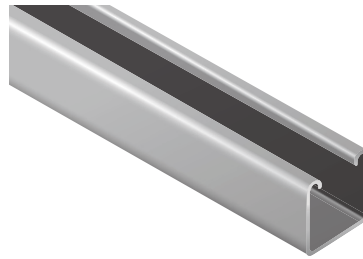
Plain Channel

DR41

Item No.

4004041413 (3 meters long)

4004041416 (6 meters long)



| Span or column unsupported Height in mm | Uniform Load at 175 N/mm ² Stress.kg | Deflection in mm at 175 N/mm ² | Uniform Load at Max. Deflec. Of 1/200th. Span. Kg | Uniform load at Max. Deflec. Of 1/360th. Span. Kg | Max. Load of column loaded @ Centroid kg | Max. Load of column loaded @ slot face kg |
|--|--|--|--|--|---|--|
| 500 | 884 | 0.95 | - | - | 5379 | 1650 |
| 1000 | 442 | 3.82 | - | 321 | 3373 | 1395 |
| 1500 | 294 | 8.60 | 257 | 142 | 2020 | 1093 |
| 2000 | 221 | 15.29 | 144 | 80 | 1395 | 879 |
| 2500 | 176 | 23.89 | 92 | 51 | 1044 | 725 |
| 3000 | 147 | 34.40 | 64 | 35 | (816) | (607) |

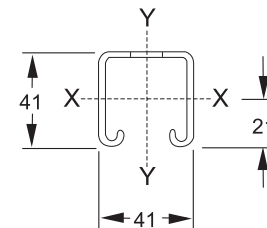
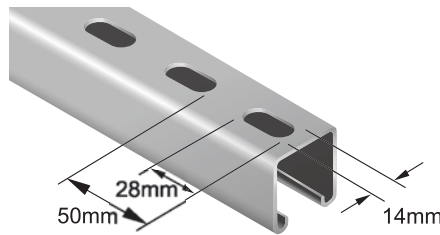
Slotted Channel

DR41S

Item No.

4002041413 (3 meters long)

4002041416 (6 meters long)



| Span or column unsupported Height in mm | Uniform Load at 175 N/mm ² Stress.kg | Deflection in mm at 175 N/mm ² | Uniform Load at Max. Deflec. Of 1/200th. Span. Kg | Uniform load at Max. Deflec. Of 1/360th. Span. Kg | Max. Load of column loaded @ Centroid kg | Max. Load of column loaded @ slot face kg |
|--|--|--|--|--|---|--|
| 500 | 819 | 1.05 | - | - | 5100 | 1635 |
| 1000 | 409 | 4.18 | - | 271 | 3284 | 1389 |
| 1500 | 273 | 9.41 | 217 | 120 | 1899 | 1062 |
| 2000 | 204 | 16.73 | 122 | 67 | 1297 | 843 |
| 2500 | 163 | 26.15 | 78 | 43 | 970 | 691 |
| 3000 | 136 | 37.65 | 54 | 30 | (761) | (578) |

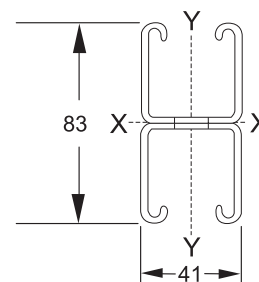
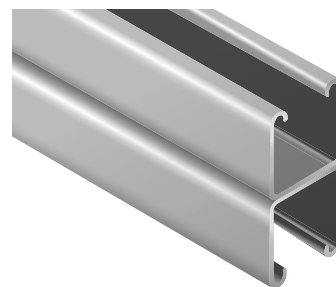
Combination Channel

DR41D

Item No.

4009041413 (3 meters long)

4009041416 (6 meters long)



| Span or column unsupported Height in mm | Uniform Load at 175 N/mm ² Stress.kg | Deflection in mm at 175 N/mm ² | Uniform Load at Max. Deflec. Of 1/200th. Span. Kg | Uniform load at Max. Deflec. Of 1/360th. Span. Kg | Max. Load of column loaded @ Centroid kg | Max. Load of column loaded @ slot face kg |
|--|--|--|--|--|---|--|
| 500 | - | - | - | - | 11682 | 2864 |
| 1000 | 1253 | 2.15 | - | - | 10451 | 2783 |
| 1500 | 835 | 4.84 | - | 718 | 7790 | 2551 |
| 2000 | 626 | 8.61 | - | 404 | 5068 | 2170 |
| 2500 | 501 | 13.45 | 465 | 258 | 3410 | 1796 |
| 3000 | 417 | 19.37 | 323 | 179 | (2427) | (1480) |

Grade 304 & 316 Stainless Steel and special length available on request