

Main Contractor:
Zhen Hua Engineering Co. Ltd.
振華工程有限公司

Client:
**Civil Engineering and Development
Department**

Products:
**JAM-D A4 Stainless Steel Drop-in Anchor
M10x40, M12x50**

Application:
**Fixing of Stainless Steel Bracket for
Working Platforms on Pier Construction**

Date: 2008 08



Sai Kung Public Pier No. 2 (CV/2005/015)
西貢二號公眾碼頭



Main Contractor:
**China Harbour Engineering Company
Limited**
中國港灣工程有限責任公司

Struct.Engr/Client:
Ove Arup and Partners H K Ltd.
/Highways Department

Sub-Contractor:
Luen Hing Construction & Engineering Ltd.

Products:
**JAM D M12x50 A4 Stainless Steel Drop-in
Anchors with A4 Stainless Steel M12x25mm
Hex Bolts , Flat Washers and Special Square
Clips**

Application:
**Installation of Stainless Steel Expanded
Mesh for Construction Gaps Between
Vertical Sides of Viaduct Decking**

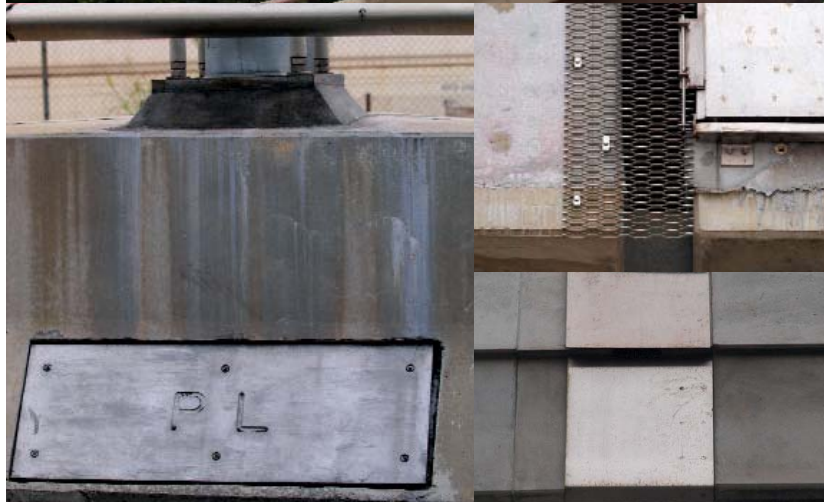
Products:
**JAM D M6x25 A4 Stainless Steel Drop-in
Anchors with A4 Stainless Steel M6x20mm
Countersunk Head Screws**

Application:
**Fastening of Cable Pitch on Concrete Kerb
on Deckings**

Sub-Contractor:
Sanfield Industries Ltd. (Expansion Joint)

Products:
**JAM D M12x50 A4 Stainless Steel Drop-in
Anchors with A4 Stainless Steel M12 x
25mm Hex Socket Flat Head Screw**
Application:
**Fixing Stainless Steel Cover Plates for
Expansion Joints on Vertical Sides of
Viaduct Decking**

Date: 2007 10



HY/2000/21 - Route 8 Ngong Shuen Chau Viaduct
八號幹線 - 昂船洲高架道路